

### Medicare guidelines

Before ordering a PET scan to evaluate your patient for Alzheimer's disease, you'll need to maintain and furnish upon request the following information and test results:

- ☐ date of onset of symptoms
- ☐ mini mental status exam (MMSE) or similar test score
- ☐ neuropsychological testing
- ☐ diagnosis of clinical syndrome
- ☐ presumptive cause (possible, probable, uncertain AD)
- ☐ results of structural imaging (MRI, CT)
- ☐ relevant laboratory tests (B12, thyroid hormone)
- ☐ number and name of prescribed medications

Notes \_\_\_\_\_

Signature \_\_\_\_\_ Date \_\_\_\_/\_\_\_\_/\_\_\_\_

For more information on Medicare guidelines and how it relates to PET scans and AD, please refer to Medicare's Web site at [www.medicare.gov](http://www.medicare.gov) or call

For more information on PET scans, please visit the following websites:

[www.pharmalogic.info](http://www.pharmalogic.info) | [www.petscan.org](http://www.petscan.org) | [www.jpnm.org/elr.html](http://www.jpnm.org/elr.html)



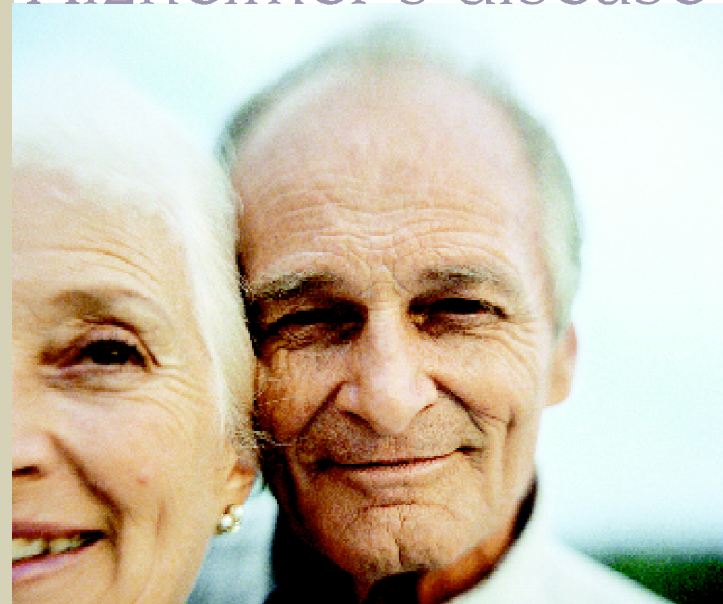
1 South Ocean Boulevard, Suite 206  
Boca Raton, Florida 33432

Tel: 561.416.0085 • Fax: 561.416.0083  
Toll Free: 888.475.2053

Email: [info@pharmalogic.info](mailto:info@pharmalogic.info)

## PET & PET/CT IMAGING

a logical choice  
*for early detection of*  
Alzheimer's disease



Alzheimer's disease (AD) robs patients not only of years, but of simple human dignity. Without remorse, it strips patients of something as basic as saying goodbye to a loved one, a face they can no longer recognize.

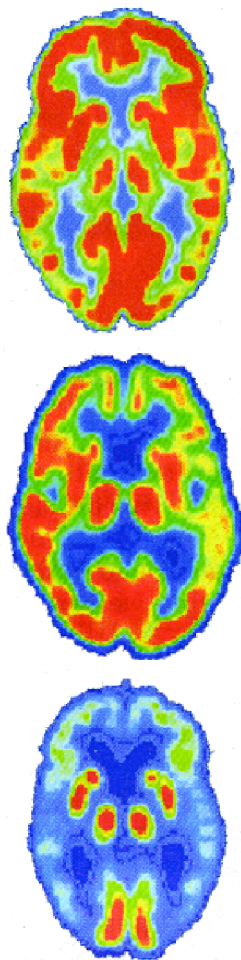
While no cure exists, some new prescription medications have a neutralizing effect on mild to moderate cases; improving memory and other cognitive functions. And, in many cases, delaying indefinitely the deleterious symptoms of AD. Detecting AD early enough for these drugs to work to peak capacity remains the challenge.

### ***Logical because of your patients***

PET scans require little patient preparation other than refraining from food or drink six hours prior. The injection of radioactive glucose has no side effects. Generally, the entire procedure takes about two hours from arrival to departure and your physician can typically have verbal results that same day.

Most importantly, PET scans offer patients the only true defense available: early detection. Starting treatment in AD's early stages not only delays the disease, but buys quality of life and dignity for your patient, their family and caretakers. With more than four million Americans suffering from AD and an increasing 50+ population, that's something you literally can't put a price on.

To order a PET scan for your patient, please call your hospital or radiology office and inquire on the availability of PET or look on [www.petscan.org](http://www.petscan.org) to locate a PET center near you. Make sure to have the patient's history available when you call, as well as any diagnostic exams performed and other pertinent information (biopsy, surgery, therapy).



*"Standard neurological workups are highly accurate (on the order of 90 percent) but when PET scans are added, the rate of missed Alzheimer's diagnoses falls from about 8 percent to about 3 percent."*

*-U.S. News & World Report*

Positron Emission Tomography, or PET scans, make it easier to detect AD in its earliest stages. Using a special camera, along with an injection of radioactive glucose in the patient, PET scans project three-dimensional images of cell activity in living tissues; essentially photographing an active biological process. This makes it possible to differentiate normal brain activity with the diminished capabilities associated with AD. Thus, enabling PET scans to detect AD months, even years before any of the commonly known symptoms (memory loss, motor skill deterioration) appear.

PET scans also serve a few other roles, one being the elimination of AD as a possibility, facilitating a more accurate diagnosis and treatment for patients suffering similar symptoms (depression, the effects of normal aging). The other, as monitor of a patient's response to drug treatment for AD and the progression of the disease.

### ***Logical because it's covered***

Until just recently, Medicare and private insurance companies only covered PET scans as related to diagnosis and treatment for cancer and select cardiological and neurological conditions. Medicare now offers coverage of PET scans for AD. Please see the outside panel of this brochure for necessary criteria and information needed for Medicare coverage for an AD-related PET scan.

